

DAVEY

LIGHTING

ENGLAND

www.davey-lighting.co.uk

HEAD OFFICE

DAVEY LIGHTING

UNIT 1 & 2

WROSLYN ROAD INDUSTRIAL ESTATE

FREELAND

OXFORDSHIRE

OX29 8HZ

TEL- 0044 1993 880228

FAX- 0044 1993 880457

sales@davey-lighting.co.uk

SHOWROOM

228 THE DESIGN CENTRE

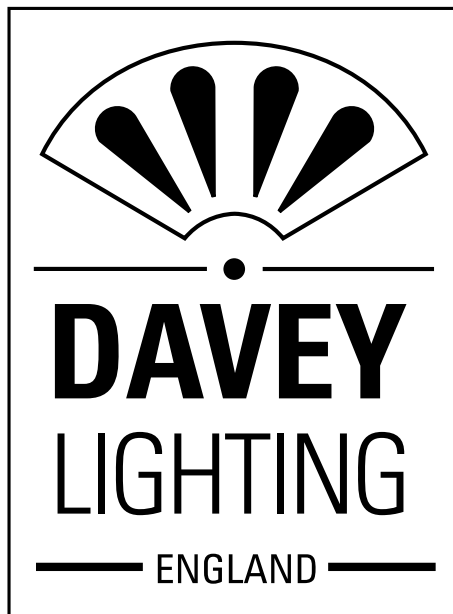
CHELSEA HARBOUR

LONDON

SW10 0XE

TEL- 0044 2073 512130

showroom@davey-lighting.co.uk



With roots dating back to the shipyards of nineteenth century London, Davey Lighting combines industrial design, traditional craftsmanship and the finest raw materials. Authentic and unique, lights are manufactured in England with the same attention to detail required for their original industrial purpose. Simplicity of design and choice of finish, including weathered brass and copper, polished aluminium, galvanised cast iron and shot blasted cast iron make Davey lights equally suited to traditional or contemporary schemes.

From castings and spinings to specialist engineering work, all components are made by hand by small specialist UK suppliers according to centuries-old tradition. Long standing relationships mean bespoke orders or customisation of existing lights can be made upon request without the need for high volume production.

Founded in 1885 in London's West India Docks, Davey & Co's marine lighting and hardware graced many of history's best-known vessels. As Britain's maritime heyday faded, Davey & Co used the skills honed manufacturing deck lights, saloon and navigation lanterns to launch Davey Lighting. Davey's hand-made fixtures were snapped up by the world of architecture and design, taking pride of place in locations such as the Savoy Hotel. Their industrial aesthetic and enduring appeal means Davey lights can still be spotted in many of the capital's best interiors including Shoreditch House, J Sheekey and Jamie Oliver's 15.

Original BTC founder Peter Bowles acquired the company in 2010. Today, the factory is based in Oxford and Tim James, whose grandfather joined Davey & Co in 1897 is still associated with the company.



MAST LIGHTS

01 / 03



WELL GLASS
BRACKET LIGHTS

04 / 08



BULKHEAD
FITTINGS

09 / 19



MARINE WELL
GLASS FITTINGS

20 / 24



STEP LIGHTS

25 / 30



UPLIGHTING

31 / 32



ACCENT & SPOT
LIGHTS

33 / 36



PILLAR LIGHTS

37 / 39



BOX WALL & BOX
PENANT LIGHTS

40 / 43



PENDANT
REFLECTORS

44 / 47



DECKLIGHTS

48 / 51



PARAFFIN TYPE
LANTERNS

52 / 53



SPARES &
ACCESSORIES

54 / 57

SECTION 1 MAST LIGHTS



PRODUCT CODE

MARINE MAST LIGHT

0751

DESCRIPTION

A timeless design from the mid 20th century, originally a mast-mounted fitting for illuminating yacht decks. Its shape ensured rigging lines were not snagged. This clean profile lends itself to being unobtrusive when required or being used as a stylish detail for both interior and exterior accent lighting.

Cast in bronze or aluminium, there are several finishes. Rear cable entry and surface mounting.

A remote transformer is required.

A variety of lighting effects can be achieved, from pin point to a soft wash, dependant on lamp beam spread. See following page for lamp details (article number 9943).

SPECIFICATIONS

Lampholder:	GX5.3 for 35W max non-dichroic halogen reflector lamp. See following page for lamp order codes.
Lamp type:	Non dichroic reflector lamp should be used to reflect heat forwards. This allows a 35W max lamp to be used (20W max if dichroic).
Dimensions:	Height: 130mm Width: 80mm Projection: 85mm



PRODUCT CODE

OPTIONS

0751/AL/AN	Anodised aluminium
0751/AL/PO	Polished aluminium
0751/AL/SD	Sandblasted aluminium
0751/GM/PO	Polished bronze
0751/GM/SD	Sandblasted bronze
0751/GM/SD/WE	Weathered sandblasted bronze

PRODUCT CODE

CAST TRANSFORMER BOX

0759

DESCRIPTION

Surface mounted, for use with 0751 mast light where a remote transformer is not possible. Hollow back contains weatherproof transformer. Sandblasted finish, available in aluminium or bronze.

Illustration shows 0759 housing with 0751

SPECIFICATIONS

Dimensions:	Length: 150mm Width: 120mm Projection: 35mm (excluding mast light)
--------------------	--

PRODUCT CODE

OPTIONS

0759/AL/SD/AN	Sandblasted anodised aluminium plaque c/w transformer (excludes mast light).
0759/AL/PO/AN	Polished anodised aluminium plaque c/w transformer (excludes mast light)
0759/GM/SD	Sandblasted bronze plaque c/w transformer (excludes mast light).
0759/GM/SD/WE	Weathered sandblasted bronze plaque c/w transformer (excludes mast light).



CAST WALL PLAQUE **PRODUCT CODE****0752****DESCRIPTION**

Cast wall plaque with 10mm corner spacers. Use with 0751 mast light and with 0753 cast numerals for house numbering. Sandblasted finish in aluminium or bronze.

Wall Plaque Only, 0715 and 0753 not included.

SPECIFICATIONS

Length: 270mm

Width: 120mm

OPTIONS

Sandblasted aluminium
 Sandblasted bronze
 Weathered sandblasted bronze

PRODUCT CODE

0752/AL/SD
 0752/GM/SD
 0752/GM/SD/WE

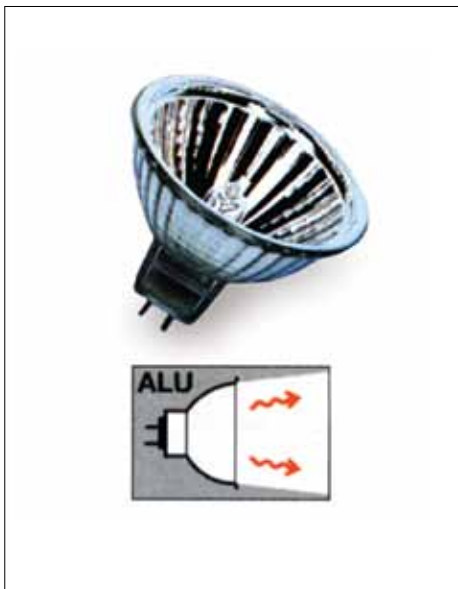
CAST NUMERALS **PRODUCT CODE****0753****DESCRIPTION**

Cast numerals, helvetica font, 50mm high. Rear pin fixing with 5mm stand off. In aluminium or brass, faces only polished.

Number 0, aluminium
 Numbers 1-9, aluminium
 Number 0, brass
 Numbers 1-9, brass
 Cast letter A, polished aluminium
 Cast letter B, polished aluminium
 Cast letter A, polished brass
 Cast letter B, polished brass

PRODUCT CODE

0753/AL/PO/00
 0753/AL/PO/01-09
 0753/BR/PO/00
 0753/BR/PO/01-09
 0754/AL/PO/A
 0754/AL/PO/B
 0754/BR/PO/A
 0754/BR/PO/B

ALUMINIUM COATED HALOGEN REFLECTOR LAMP **PRODUCT CODE****9943****DESCRIPTION**

Recommended reflector lamp for use with 0751 mast light as backward heat is to be avoided in this small, enclosed fitting.

20W - 12° beam spread
 20W - 24° beam spread
 20W - 36° beam spread
 35W - 12° beam spread
 35W - 24° beam spread
 35W - 36° beam spread
 35W - 60° beam spread

PRODUCT CODE

9943/AL/20/12
 9943/AL/20/24
 9943/AL/20/36
 9943/AL/35/12
 9943/AL/35/24
 9943/AL/35/36
 9943/AL/35/60

SECTION 2 WELL GLASS BRACKET LIGHTS



EXTERIOR BRACKET LIGHT

PRODUCT CODE

7677



DESCRIPTION

Classic galvanized outdoor lighting, catalogued for more than half a century. Still widely specified where traditional architecture requires sympathetic lighting and, latterly, where these industrial and functional qualities suit contemporary locations.

The 60W size is fitted to a right-angle arm, and the 100W size to a swan neck, giving it the greater projection required of a larger diameter reflector. Both sizes can be fitted with a corner fork. Glass can be clear or frosted.

Rated IP54.

SPECIFICATIONS

Lampholder:	E27 (ES) for GLS lamp or low energy equivalent
Dimensions:	Height o/a: 60W: 380mm 100W: 350mm Projection o/a: 60W: 230mm 100W: 460mm Reflector Diameter: 60W: 195mm 100W: 255mm Back Plate Diameter: 60W: 100mm 100W: 100mm Corner Bracket: Height: 175mm Splay: 70mm



OPTIONS

60W clear and round back plate	7677/GA/060C/A
60W clear and corner fork	7677/GA/060C/AC
60W frosted and round back plate	7677/GA/0 60F/A
60W frosted and corner fork	7677/GA/060F/AC
100W clear and round back plate	7677/GA/100C/S
100W clear and corner fork	7677/GA/100C/SC
100W frosted and round back plate	7677/GA/100F/S
100W frosted and corner fork	7677/GA/100F/SC

PRODUCT CODE



MOUNTING OPTIONS

Different mounting options possible, including straight conduit drop for soffit fixing and loop suspension for pendant use. Also available with wire guard.

DESCRIPTION

Galvanised wire guard for 7672 and 7677 bracket lights.

OPTIONS

60W Galvanised wire guard	7677/GA/GRD/060
100W Galvanised wire guard	7677/GA/GRD/100

PRODUCT CODE



PRODUCT CODE

BRACKET LIGHT

7672

DESCRIPTION

The same galvanized components as type 7677, with the omission of the reflector. i.e. 60W as illustration, 100W on swan neck bracket. Glass can be clear or frosted.

SPECIFICATIONS

Lampholder: E27 (ES) for GLS or low energy equivalent.
Dimensions: **Height o/a:**
 60W: 380mm 100W: 350mm
Projection: 60W: 190mm 100W: 390mm

PRODUCT CODE

OPTIONS

7672/GA/060C/A	60W clear and round back plate
7672/GA/060C/AC	60W clear and corner fork
7672/GA/060F/A	60W frosted and round back plate
7672/GA/060F/AC	60W frosted and corner fork
7672/GA/100C/S	100W clear, round back plate and swan neck
7672/GA/100C/SC	100W clear, corner fork and swan neck
7672/GA/100F/S	100W frosted, round back plate and swan neck
7672/GA/100F/SC	100W frosted, corner fork and swan neck



PRODUCT CODE

EXTERIOR BRACKET LIGHT

7680

DESCRIPTION

Familiar continental style well glass fitting with screw glass. The clean design suits both traditional and modern locations. The arm is available as a standard right angle or in the classic French canted version. Heavy cast construction and available in galvanized iron or raw sandblasted bronze. Wall or corner fixing. Clear glass only.

Canted arm can be seen opposite.

SPECIFICATIONS

Lampholder: E27 (ES) for 60W max GLS or low energy equivalent.
Dimensions: **Height o/a:**
Right angle: 365mm **Canted:** 255mm
Projection o/a:
Right angle: 390mm **Canted:** 470mm
Reflector diameter: 310mm
Backplate diameter: 100mm
Corner Bracket:
Height: 175mm **Splay:** 70mm



PRODUCT CODE

GALVANIZED OPTIONS

7680/GA/CL	Standard right angle and round backplate
7680/GA/CL/CR	Standard right angle and corner fork
7680/GA/CL/C	Canted arm and round backplate
7680/GA/CL/CCR	Canted arm and corner fork

SANDBLASTED BRONZE OPTIONS

7680/GM/CL	Standard right angle and round backplate
7680/GM/CL/CR	Standard right angle and corner fork
7680/GM/CL/C	Canted arm and round backplate
7680/GM/CL/CCR	Canted arm and corner fork

EXTERIOR BRACKET LIGHTS

PRODUCT CODE

7684
7685**DESCRIPTION**

Similar in age and use to type 7677, but in 60W size only. The heavy cast reflector is retained by brass wing nuts and bolts for easier access to re-lamp. Available with a canted wall bracket as well as a right angle arm. Glass can be clear or frosted.

7684 is shown, without reflector. A simple ring retains the glass instead. Available in galvanised cast iron, or sandblasted bronze.

SPECIFICATIONS

Lampholder:	E27 (ES) for 60W max GLS or low energy equivalent
Dimensions:	Length o/a:
	7685: 380mm 7684: 380mm
	Projection:
	7685: 230mm 7684: 190mm
	7685: Canted 425 : Canted 425
	Back Plate Diameter:
	7685: 75mm 7684: 75mm

GALVANISED OPTIONS

Clear and round back plate without reflector	7684/GA/060C/A
Clear, canted arm, round back plate without reflector	7684/GA/060C/C
Frosted and round back plate without reflector	7684/GA/060F/A
Frosted, canted arm, round back plate without reflector	7684/GA/060F/C
Clear and round back plate with reflector	7685/GA/060C/A
Clear, canted arm, round back plate with reflector	7685/GA/060C/C
Frosted and round back plate with reflector	7685/GA/060F/A
Frosted, canted arm, round back plate with reflector	7685/GA/060F/C

PRODUCT CODE

SANDBLASTED BRONZE OPTIONS

Clear and round back plate without reflector	7684/GM/060C/A
Clear, canted arm, round back plate without reflector	7684/GM/060C/C
Frosted and round back plate without reflector	7684/GM/060F/A
Frosted, canted arm, round back plate without reflector	7684/GM/060F/C
Clear and round back plate with reflector	7685/GM/060C/A
Clear, canted arm, round back plate with reflector	7685/GM/060C/C
Frosted and round back plate with reflector	7685/GM/060F/A
Frosted, canted arm, round back plate with reflector	7685/GM/060F/C

PRODUCT CODE



PRODUCT CODE

7666

WELL GLASS FITTING WITH REFLECTOR

DESCRIPTION

This traditional style of exterior light has been a familiar sight on buildings for half a century, and with contemporary as well as traditional appeal, this range is still much in demand for both urban and rural locations.

Die cast in aluminium alloy and polyester powder coated, their longevity is assured.

Grey versions have white reflector and black versions have black reflector.

Rated IP65.

SPECIFICATIONS

Lampholder: E27 (ES) for 100W max GLS or low energy equivalent.

Dimensions: Height: 328mm
Projection: 360mm (inc bracket)

Reflector diameter: 230mm

PRODUCT CODE

OPTIONS

- 7666/00/CL
- 7666/00/FR
- 7666/00/CL/C
- 7666/00/FR/C
- 7666/BL/CL
- 7666/BL/FR
- 7666/BL/CL/C
- 7666/BL/FR/C

- Grey finish, clear glass, round back plate
- Grey finish, frosted glass, round back plate
- Grey finish, clear glass, corner fixing
- Grey finish, frosted glass, corner fixing
- Black finish, clear glass, round back plate
- Black finish, frosted glass, round back plate
- Black finish, clear glass, corner fixing
- Black finish, frosted glass, corner fixing



PRODUCT CODE

7665

WELL GLASS FITTING

DESCRIPTION

Basic well glass fitting with grey ribbed dome top and white glass retaining ring. Mounting is on a swan neck bracket with round besa box dome cover or corner fork.

The glass is clear or frosted.

Rated IP65.

SPECIFICATIONS

Lampholder: E27 (ES) for 100W max GLS or low energy equivalent.

Dimensions: Height: 328mm
Projection: 360mm (inc bracket)

PRODUCT CODE

OPTIONS

- 7665/00/CL
- 7665/00/FR
- 7665/00/CL/C
- 7665/00/FR/C
- 7665/BL/CL
- 7665/BL/FR
- 7665/BL/CL/C
- 7665/BL/FR/C

- Grey finish, clear glass, round back plate
- Grey finish, frosted glass, round back plate
- Grey finish, clear glass, corner fixing
- Grey finish, frosted glass, corner fixing
- Black finish, clear glass, round back plate
- Black finish, frosted glass, round back plate
- Black finish, clear glass, corner fixing
- Black finish, frosted glass, corner fixing



SECTION 3 BULKHEAD FITTINGS



PRODUCT CODE RECTANGULAR BULKHEAD

7530

DESCRIPTION

Rectangular bulkhead with clear oval prismatic glass. The aluminium die cast body is available in various colours. 20mm surface conduit entry or rear knock-out.

There are two light source options: 150W GLS or 1 x 26W PLC with integral gear tray.

Rated IP65.

Self contained maintained and non maintained emergency versions available – please enquire.

SPECIFICATIONS

Lampholder: E27 (ES) for 150W max GLS
G24 for 26W PLC
Dimensions: Length: 297mm
Width: 176mm
Projection: 135mm



PRODUCT CODE

OPTIONS

7530/BL/E27
7530/BL/G24
7530/00/E27
7530/00/G24

Black for 150W GLS
Black for 26W PLC
Grey for 150W GLS
Grey for 26W PLC

PRODUCT CODE OVAL ALUMINIUM BULKHEAD
FITTINGS

7001
7003

DESCRIPTION

paint finish and clear prismatic glass. Available with or without galvanized wire protective guard. Normally for a tungsten lamp, may be fitted with compact fluorescent gear tray.

Rear conduit entry and through backplate fixing.

SPECIFICATIONS

Lampholder: E27 (ES) for 60W GLS
G24 +gear for 13W CFL
Dimensions: Length: 244mm
Width: 150mm
Projection: 100mm



PRODUCT CODE

OPTIONS

7003/AL/E27
7001/AL/E27
7003/AL/G24
7001/AL/G24

E27 (ES) with guard for 60W GLS
E27 (ES) without guard for 60W GLS
G24 (CFL) with guard for 13W CFL
G24 (CFL) without guard for 13W CFL



OVAL ALUMINIUM BULKHEAD FITTING

PRODUCT CODE

7527

DESCRIPTION

Heavy cast aluminium bulkhead with hinged front, secured by 'radiator' type key. Clear prismatic glass. Through back plate fixing and 20mm entry for surface conduit at one end.

Grey hammerite paint finish. Normally for a tungsten lamp, may be fitted with compact fluorescent gear tray.

SPECIFICATIONS

Lampholder:	E27 (ES) for 60W GLS G24 +gear for 13W CFL
Dimensions:	Length: 240mm Width: 160mm Projection: 120mm

OPTIONS

E27 (ES) for 60W GLS
G24 (CFL) for 13W CFL

PRODUCT CODE

7527/AL/E27
7527/AL/G24



ALUMINIUM BULKHEAD FITTINGS

PRODUCT CODE

8120

8122

8125

DESCRIPTION

Oval, die-cast aluminium bulkhead in three versions: unguarded, guarded and semi-shielded. Natural zinc-grey finish with frosted glass diffuser. Front bezel secured by stainless steel socket headscrews. Rear cable entry Through backplate fixing.

For interior the Compact florescent lamp (CFL) must be used to avoid over heating

Rated IP54.

SPECIFICATIONS

Lampholder:	E27 (ES) for 60W GLS G24 +gear for 13W CFL
Dimensions:	Length: 230mm Width: 130mm Projection: 100mm

OPTIONS

E27 (ES) without guard for 60W GLS
E27 (ES) with guard for 60W GLS
E27 (ES) with horizontal 'eyelid' shield for 60W GLS
G24 (CFL) without guard for 13W CFL
G24 (CFL) with guard for 13W CFL
G24 (CFL) with horizontal 'eyelid' shield for 13W CFL

PRODUCT CODE

8120/AL/E27
8122/AL/E27
8125/AL/E27
8120/AL/G24
8122/AL/G24
8125/AL/G24



PRODUCT CODE

ALUMINIUM BULKHEAD FITTINGS

8134
8138

DESCRIPTION

Circular, die-cast aluminium bulkhead in two versions: guarded or unguarded. Natural zinc-grey finish with frosted glass diffuser. Front bezel secured by stainless steel socket head screws. Rear cable entry Through backplate fixing. Normally for a tungsten lamp, may be fitted with compact fluorescent gear tray.

Rated IP54.

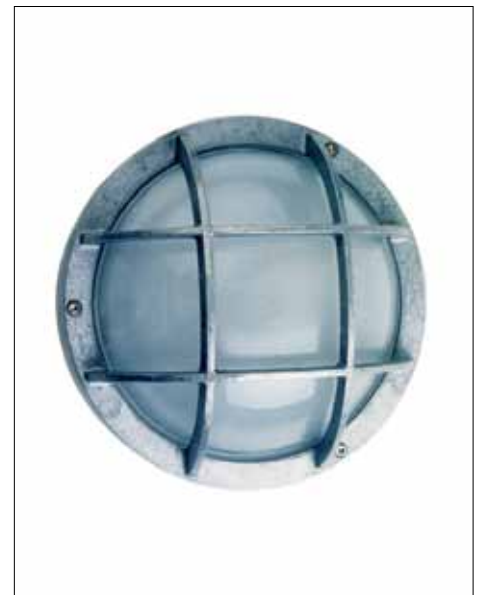
SPECIFICATIONS

Lampholder: E27 (ES) for 100W max GLS
G24 +gear for 18W CFL
Dimensions: Diameter: 260mm
Projection: 130mm

PRODUCT CODE

OPTIONS

8134/AL/E27	E27 (ES) without guard for 60W GLS
8138/AL/E27	E27 (ES) with guard for 60W GLS
8134/AL/G24	G24 (GFL) without guard for 18W CFL
8138/AL/G24	G24 (GFL) with guard for 18W CFL



PRODUCT CODE

CAST IRON SHIP'S BULKHEAD FITTING

7524

DESCRIPTION

Robust bulkhead fitting in heavy cast iron, galvanized for weather protection and with wire guard in natural brass. Hinged door secured by 'radiator' type key.

Fixing through drilled feet; 20mm entry for surface conduit.

SPECIFICATIONS

Lampholder: B22 (BC) for 60W max GLS
Dimensions: Diameter: 250mm
Projection: 125mm
Weight: 3kgs

PRODUCT CODE

OPTIONS

7524/GA/CL	With clear glass
7524/GA/FR	With frosted glass



BRASS BULKHEAD FITTINGS WITH INTERNAL FIXING POINTS

PRODUCT CODE
7027
7028


DESCRIPTION

Two sizes of die-cast bulkhead lights in natural brass, unlacquered, with frosted glass diffusers. Different finishes available. Front guard secured by three wing nuts. Dome nuts, as illustrated, optional by request. Glanded surface cable entry.

Rated IP54.

SPECIFICATIONS

Lampholder: E27 (ES) for 75W max GLS
 Dimensions: Diameter: 215mm
 Projection: 105mm

OPTIONS

Natural brass
 Weathered brass
 Chrome plated

7027
PRODUCT CODE

7027/BR
 7027/BR/WE
 7027/CP

SPECIFICATIONS

Lampholder: E27 (ES) for 60W max GLS
 Dimensions: Diameter: 190mm
 Projection: 95mm

OPTIONS

Natural brass
 Weathered brass
 Chrome plated

7028
PRODUCT CODE

7028/BR
 7028/BR/WE
 7028/CP



BRASS BULKHEAD FITTINGS WITH EXTERNAL FIXING THROUGH FEET

7029
7030


DESCRIPTION

Two sizes of die-cast bulkhead lights in natural brass, unlacquered, with frosted glass diffusers. Different finishes available. Front guard secured by three wing nuts. Dome nuts, as illustrated, optional by request. Glanded surface cable entry.

Rated IP54.

SPECIFICATIONS

Lampholder: E27 (ES) for 75W max GLS
 Dimensions: Diameter: 215mm
 Projection: 100mm

OPTIONS

Natural brass
 Weathered brass
 Chrome plated

7029
PRODUCT CODE

7029/BR
 7029/BR/WE
 7029/CP

SPECIFICATIONS

Lampholder: E27 (ES) for 60W max GLS
 Dimensions: Diameter: 175mm
 Projection: 100mm

OPTIONS

Natural brass
 Weathered brass
 Chrome plated

7030
PRODUCT CODE

7028/BR
 7028/BR/WE
 7028/CP

PRODUCT CODE
7028/M

YACHT BRASS BULKHEAD FITTING

DESCRIPTION

A small die cast bulkhead light in natural brass, unlacquered and with frosted glass diffuser. Different finishes available. Front guard secured by two wing nuts, dome nuts optional by request. Glanded surface cable entry.

Rated IP54.

SPECIFICATIONS

Lampholder: BA15d (SBC) for 40W max candle lamp.
Dimensions: Diameter: 155mm
Projection: 60mm



PRODUCT CODE

OPTIONS

7028/BR/M
7028/BR/M/WE
7028/CP/M

Natural brass
Weathered brass
Chrome plated

PRODUCT CODE

OVAL BRASS BULKHEAD FITTINGS WITH INTERNAL FIXING POINTS

7034
7035
7036

DESCRIPTION

Three sizes of die-cast bulkhead lights in natural brass, unlacquered with frosted, prismatic glass diffusers. Different finishes available. Front guards secured by four wing nuts, dome nuts optional by request. Glanded surface cable entry.

Rated IP54.

SPECIFICATIONS

Lampholder: E27 (ES) for 100W max GLS
Dimensions: Length: 260mm
Width: 195mm
Projection: 150mm



PRODUCT CODE

OPTIONS

7034/BR
7034/BR/WE
7034/CP

Natural brass
Weathered brass
Chrome plated

7035

SPECIFICATIONS

Lampholder: E27 (ES) for 75W max GLS
Dimensions: Length: 235mm
Width: 165mm
Projection: 110mm

PRODUCT CODE

OPTIONS

7035/BR
7035/BR/WE
7035/CP

Natural brass
Weathered brass
Chrome plated

7036

SPECIFICATIONS

Lampholder: E27 (ES) for 40W max GLS
Dimensions: Length: 175mm
Width: 130mm
Projection: 95mm

PRODUCT CODE

OPTIONS

7036/BR
7036/BR/WE
7036/CP

Natural brass
Weathered brass
Chrome plated





OVAL BRASS BULKHEAD FITTINGS WITH INTERNAL FIXING POINTS

DESCRIPTION

Three sizes of die-cast bulkhead lights in natural brass, unlacquered, with frosted prismatic glass diffusers and horizontal eyelid shield secured with socket head screws. Different finishes available. Glanded surface cable entry.

Rated IP54.

SPECIFICATIONS

Lampholder:	E27 (ES) for 100W max GLS Low energy conversion possible
Dimensions:	Height: 210mm Width: 274mm Projection: 154mm

OPTIONS

Natural brass
Weathered brass
Chrome plated

PRODUCT CODE

7434

7435

7436

7434

PRODUCT CODE

7434/BR
7434/BR/WE
7434/CP

SPECIFICATIONS

Lampholder:	E27 (ES) for 60W max GLS Low energy conversion possible
Dimensions:	Height: 172mm Width: 245mm Projection: 115mm

OPTIONS

Natural brass
Weathered brass
Chrome plated

7435

PRODUCT CODE

7435/BR
7435/BR/WE
7435/CP

SPECIFICATIONS

Lampholder:	E27 (ES) for 40W max GLS Low energy conversion possible
Dimensions:	Height: 140mm Width: 182mm Projection: 110mm

OPTIONS

Natural brass
Weathered brass
Chrome plated

7436

PRODUCT CODE

7436/BR
7436/BR/WE
7436/CP

PRODUCT CODE

7427
7428

BRASS BULKHEAD FITTINGS WITH INTERNAL FIXING POINTS

DESCRIPTION

Two sizes of die-cast bulkhead lights in natural brass, unlacquered, with frosted glass diffusers and eyelid shield, secured with socket head screws. Different finishes available. Glanded surface cable entry.

Rated IP54.

7427

SPECIFICATIONS

Lampholder: E27 (ES) for 75W max GLS
Dimensions: Diameter: 226mm
Projection: 150mm

PRODUCT CODE

OPTIONS

7427/BR Natural brass
7427/BR/WE Weathered brass
7427/CP Chrome plated

7428

SPECIFICATIONS

Lampholder: E27 (ES) for 60W max GLS
Dimensions: Diameter: 200mm
Projection: 105mm

PRODUCT CODE

OPTIONS

7428/BR Natural brass
7428/BR/WE Weathered brass
7428/CP Chrome plated



PRODUCT CODE

7225
7226

BRASS BULKHEAD FITTINGS WITH INTERNAL FIXING POINTS

DESCRIPTION

Two styles of die-cast bulkhead lights in natural brass, unlacquered, with frosted glass diffusers. Different finishes available. Fronts secured with socket head screws.

Rated IP54.

SPECIFICATIONS

Lampholder: E27 (ES) for 100W max GLS
Dimensions: Diameter: 240mm
Projection: 120mm

7225

WITH EYELID SHIELD

PRODUCT CODE

OPTIONS

7225/BR Natural brass
7225/BR/WE Weathered brass
7225/CP Chrome plated

7226

WITH CROSS GUARD

PRODUCT CODE

OPTIONS

7226/BR Natural brass
7226/BR/WE Weathered brass
7226/CP Chrome plated



MINATURE EXTERIOR
BULKHEAD FITTINGS

PRODUCT CODE

8034
8035
8037
8038**DESCRIPTION**

Round bulkheads in four versions. Die cast in aluminium or brass and with frosted glass diffusers. Surface mounting with rear cable entry. The front bezel is secured with three stainless steel socket head screws.

Rated IP65.

SPECIFICATIONS

Lampholder: G9 for 240V 40W max halogen capsule
or GX53 for 7W T2 CFL

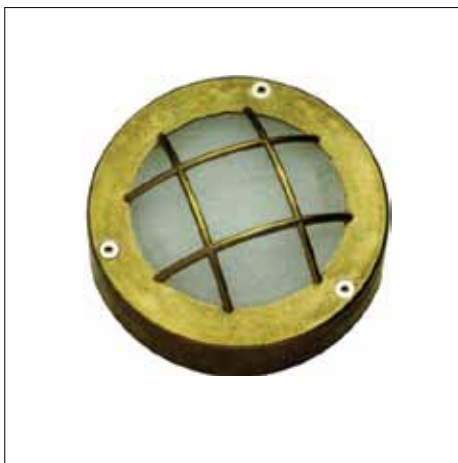
Dimensions: **Diameter:** 142mm
Projection: 47mm

OPTIONS

Aluminium with plain bezel for halogen Capsule
 Brass with plain bezel for halogen Capsule
 Weathered brass with plain bezel for halogen Capsule
 Aluminium with plain bezel for 7W CFL
 Brass with plain bezel for 7W CFL
 Weathered brass with plain bezel for 7W CFL
 Aluminium single shield for halogen Capsule
 Brass with single shield for halogen Capsule
 Weathered brass with plain bezel for halogen Capsule
 Aluminium single shield for 7W CFL
 Brass with single shield for 7W CFL
 Weathered brass with single shield for 7W CFL
 Aluminium with double shield for halogen Capsule
 Brass with double shield for halogen Capsule
 Weathered Brass with double shield for halogen Capsule
 Aluminium with double shield for 7W CFL
 Brass with double shield for 7W CFL
 Weathered Brass with double shield for 7W CFL
 Aluminium with guard for halogen Capsule
 Brass with guard for halogen Capsule
 Weathered Brass with guard for halogen Capsule
 Aluminium with guard for halogen Capsule 7W CFL
 Brass with guard for halogen Capsule 7W CFL
 Weathered Brass with guard for halogen Capsule 7W CFL

PRODUCT CODE

8034/AL/G9
 8034/BR/G9
 8034/BR/WE/G9
 8034/AL/GX53
 8034/BR/GX53
 8034/BR/WE/GX53
 8035/AL/G9
 8035/BR/G9
 8035/BR/WE/G9
 8035/AL/GX53
 8035/BR/GX53
 8035/BR/WE/GX53
 8037/AL/G9
 8037/BR/G9
 8035/BR/WE/G9
 8037/AL/GX53
 8037/BR/GX53
 8035/BR/WE/GX53
 8038/AL/G9
 8038/BR/G9
 8038/BR/WE/G9
 8038/AL/GX53
 8038/BR/GX53
 8038/BR/WE/GX53



PRODUCT CODE RECTANGULAR BULKHEAD FITTING

7373

DESCRIPTION

Die-cast rectangular bulkhead light in natural brass, unlacquered, with curved frosted glass diffuser. Different finishes available. Front guard secured with socket head screws.

Rated IP54.

SPECIFICATIONS

Lampholder: E27 (ES) for 75W max GLS
Low energy conversion possible
Dimensions: Height: 240mm
Width: 120mm
Projection: 137mm

PRODUCT CODE

OPTIONS

7373/BR	Natural brass
7373/BR/WE	Weathered brass
7373/CP	Chrome plated



PRODUCT CODE YACHT ALUMINIUM
7425 BULKHEAD FITTING

7425

DESCRIPTION

Cast aluminium miniature bulkhead. Weatherproof with glanded surface cable entry. Standard finish white enamel. Fixing through drilled feet. Glazed front secured by four machine screws.

SPECIFICATIONS

Lampholder: BA15d (SBC) for 25W max pygmy lamp
Dimensions: Diameter: 120mm o/a
Projection: 55mm

PRODUCT CODE

OPTIONS

7425/AL/CL	With clear glass
7425/AL/FR	With frosted glass



ROUND BULKHEAD FITTING

PRODUCT CODE

8111

**DESCRIPTION**

Round, die cast aluminium bulkhead with frosted glass. Front bezel secured by four stainless steel socket head screws. Rear cable entry and through backplate fixing. Will accept ballasted 15W CFL.

Rated IP54.

SPECIFICATIONS

Lampholder: E27 (ES) for 60W max GLS
 Dimensions: Diameter: 210mm
 Projection: 95mm

OPTIONS

Aluminium

PRODUCT CODE

8111/AL/E27

SMALL EXTERIOR
OVAL BULKHEAD

PRODUCT CODE

8124

**DESCRIPTION**

Oval die cast bulkhead in aluminium or brass. Frosted glass. Front bezel secured by two stainless steel socket head screws. Rear cable entry and through back plate fixing.

Rated IP54.

SPECIFICATIONS

Lampholder: E27 (ES) for 40W max GLS
 Dimensions: Length: 200mm
 Width: 115mm
 Projection: 90mm

OPTIONS

Aluminium
 Brass

PRODUCT CODE

8124/AL/E27
8124/BR/E27SMALL EXTERIOR
BULKHEAD FITTING

PRODUCT CODE

8123

**DESCRIPTION**

Small aluminium bulkhead, general specification as above.

For interior the Compact florescent lamp (CFL) must be used to avoid over heating

Rated IP54.

SPECIFICATIONS

Lampholder: E27 (ES) for 40W max GLS
 Dimensions: Length: 200mm
 Width: 120mm
 Projection: 110mm

OPTIONS

Aluminium

PRODUCT CODE

8123/AL/E27

SECTION 4 MARINE WELL-GLASS FITTINGS





WEATHERPROOF SHIP'S WELL GLASS LIGHT

DESCRIPTION

Weatherproof ship's well glass light with guard. Polished brass, unlacquered, or weathered finish. Glass can be clear or frosted.

Rated IP54.

SPECIFICATIONS

Lampholder: B22 (BC) for 60W max GLS or compact fluorescent equivalent

Dimensions: Length: 290mm
Projection: 105mm

OPTIONS

Polished brass and clear glass
Weathered brass and clear glass
Polished brass and frosted glass
Weathered brass and frosted glass

PRODUCT CODE

7207

PRODUCT CODE

7207/BR/CL
7207/BR/CL/WE
7207/BR/FR
7207/BR/FR/WE



MINIATURE SHIP'S WELL GLASS LIGHT

DESCRIPTION

Miniature version for yachts. Polished brass, unlacquered, or weathered finish. Glass can be clear or frosted.

Rated IP54.

SPECIFICATIONS

Lampholder: BA15d (SBC) for 240V
15W max appliance lamp

Dimensions: Length: 165mm
Projection: 85mm

OPTIONS

Polished brass and clear glass
Weathered brass and clear glass
Polished brass and frosted glass
Weathered brass and frosted glass

PRODUCT CODE

7207/M

PRODUCT CODE

7207/BR/M/CL
7207/BR/M/CL/WE
7207/BR/M/FR
7207/BR/M/FR/WE



WEATHERPROOF SHIP'S WELL GLASS LIGHT

DESCRIPTION

Robust warship well glass light of heavy cast brass construction. Weathered finish, with clear or frosted glass.

Rated IP54.

SPECIFICATIONS

Lampholder: B22 (BC) for 60W max GLS

Dimensions: Diameter: 120mm o/a
Length: 270mm
Projection: 120mm

OPTIONS

Weathered brass and clear glass
Weathered brass and frosted glass

PRODUCT CODE

7401

PRODUCT CODE

7401/BR/CL/WE
7401/BR/FR/WE

PRODUCT CODE

7204/M/B15

7204/M/GX

MINATURE GUARDED PENDANT

DESCRIPTION

Miniature guarded pendant manufactured from brass. In two versions, one for low voltage spot lighting using a 50mm reflector lamp in the open guard, and the other as a mains voltage pendant feature fitting with a well glass fitted to cover a 15W appliance lamp. Listed are the standard dimensions, but special drop lengths are possible, as well as material finishes.

SPECIFICATIONS

Lampholder: GX5.3 for 50W max halogen reflector.
A remote transformer is required.
BA15d (SBC) for 240V
15W max appliance lamp.

Dimensions: Length: 190mm
Diameter: 65mm

PRODUCT CODE

OPTIONS

7204/BR/M/GX

Polished brass, low voltage

7204/BR/M/GX/WE

Weathered brass, low voltage

7204/CP/M/GX

Chrome plated, low voltage

7204/BR/M/B15

Polished brass, mains voltage

7204/BR/M/B15/WE

Weathered brass, mains voltage

7204/CP/M/B15

Chrome plated, mains voltage



PRODUCT CODE

7681

SCREW GLASS PENDANT

DESCRIPTION

Opal screw glass pendant fitting. Cast threaded pan and ceiling plate with conduit drop. Metal work either galvanized iron or sandblasted bronze. Opal glass diffuser.

Custom finishes and drop lengths available.

Details of wall-mount options on request.

SPECIFICATIONS

Lampholder: E27 (ES) for 60W max GLS or low energy equivalent.

Dimensions: Overall drop: 450mm
Diameter: 110mm

PRODUCT CODE

OPTIONS

7681/GA/OP

Galvanized with opal glass

7681/GM/OP

Sandblasted bronze with opal glass



SHIP'S COMPANIONWAY LIGHT

PRODUCT CODE

7202



DESCRIPTION

Weatherproof ship's companionway light. Polished brass, unlacquered, or weathered finish. Glass can be clear or frosted.

Rated IP45.

SPECIFICATIONS

Lampholder: B22 (BC) for 60W max GLS or compact fluorescent equivalent
 Dimensions: Length: 190mm
 Diameter: 125mm

OPTIONS

Polished brass and clear glass
 Weathered brass and clear glass
 Polished brass and frosted glass
 Weathered brass and frosted glass

PRODUCT CODE

7202/BR/CL
 7202/BR/CL/WE
 7202/BR/FR
 7202/BR/FR/WE

MINIATURE YACHT
COMPANIONWAY LIGHT

PRODUCT CODE

7203/M



DESCRIPTION

Miniature version for yachts. Polished brass, unlacquered, or weathered finish. Glass can be clear or frosted.

Rated IP54.

SPECIFICATIONS

Lampholder: BA15d (SBC) for 240V 15W max appliance lamp
 Dimensions: Length: 105mm
 Projection: 80mm

OPTIONS

Polished brass and clear glass
 Weathered brass and clear glass
 Polished brass and frosted glass
 Weathered brass and frosted glass

PRODUCT CODE

7203/BR/M/CL
 7203/BR/M/CL/WE
 7203/BR/M/FR
 7203/BR/M/FR/WE

SHIP'S COMPANIONWAY LIGHT

PRODUCT CODE

7203



DESCRIPTION

Weatherproof ship's companionway light. Polished brass, unlacquered, or weathered finish. Glass can be clear or frosted.

Rated IP45.

SPECIFICATIONS

Lampholder: B22 (BC) for 60W max GLS or compact fluorescent equivalent
 Dimensions: Length: 190mm
 Diameter: 125mm

OPTIONS

Polished brass and clear glass
 Weathered brass and clear glass
 Polished brass and frosted glass
 Weathered brass and frosted glass

PRODUCT CODE

7203/BR/CL
 7203/BR/CL/WE
 7203/BR/FR
 7203/BR/FR/WE

PRODUCT CODE

7204

WEATHERPROOF SHIPS WELL GLASS LIGHT

DESCRIPTION

Weatherproof ships well glass light. Soffit version of 7207 and of similar construction.

Rated IP45.

SPECIFICATIONS

Lampholder: B22 (BC) for 60W max GLS
 Dimensions: Diameter: 250mm
 Projection: 125mm
 Weight: 3kgs

PRODUCT CODE

OPTIONS

7204/BR/CL
 7204/BR/CL/WE
 7204/BR/FR
 7204/BR/FR/WE

Polished brass and clear glass
 Weathered brass and clear glass
 Polished brass and frosted glass
 Weathered brass and frosted glass



PRODUCT CODE

7679

WELL GLASS PENDANT FITTING

DESCRIPTION

Simple iron pendant with screw type well glass. Standard finish galvanized with brass suspension loop and cable entry.

This light is supplied as standard with 1.5 meters of cable, stainless steel wire and a ceiling hook plate.

SPECIFICATIONS

Lampholder: E27 (ES) for 60W max GLS
 Dimensions: Height o/a: 330mm excluding suspension wire/chain
 Diameter: 100mm

PRODUCT CODE

OPTIONS

7679/GA/CL

Galvanized with clear glass



SECTION 5 STEP LIGHTS



PRODUCT CODE LOW VOLTAGE STEP OR PATH LIGHT

7568

DESCRIPTION

Low voltage step or path light in brass for surface mounting. Matt finish cast brass or weathered finish. Frosted glass diffuser. A remote transformer is required.

SPECIFICATIONS

Lampholder: G4 for 20 W max halogen capsule
Dimensions: Diameter: 100mm
Projection: 60mm

PRODUCT CODE **OPTIONS**

7568/BR Brass finish
7568/BR/WE Weathered brass finish



PRODUCT CODE LOW VOLTAGE STEP OR PATH LIGHT

7567

DESCRIPTION

Low voltage step or path light for surface mounting with plain bezel and frosted glass diffuser. Matt finish cast brass, or weathered finish. A remote transformer is required.

SPECIFICATIONS

Lampholder: G4 for 20W max halogen capsule
Dimensions: Diameter: 100mm
Projection: 45mm

PRODUCT CODE **OPTIONS**

7567/BR Brass finish
7567/BR/WE Weathered brass finish





Wall/Ceiling Light

PRODUCT CODE

8139
8140

DESCRIPTION

Simple square path/amenity light in two versions. Die cast in aluminium or brass with frosted glass diffusers. Surface mounting with rear cable entry.

Rated IP54.

SPECIFICATIONS

Lampholder: G9 for 240V 25W max. halogen capsule
Dimensions: Overall: 117mm square
Projection: 45mm

OPTIONS

Aluminium with Plain Bezel
Natural Brass with Plain Bezel
Weathered Brass with Plain Bezel
Aluminium with Cross Guard
Natural Brass with Cross Guard
Weathered Brass with Cross Guard

PRODUCT CODE

8139/AL
8139/BR
8139/BR/WE
8140/AL
8140/BR
8140/BR/WE



Wall/Ceiling Light

PRODUCT CODE

8504
8591

DESCRIPTION

Round bulkhead in two versions containing a low energy light source. Die cast in aluminium and with frosted glass diffusers. Surface mounting with rear cable entry. The front bezel is secured with the stainless steel socket head screws.

SPECIFICATIONS

Lampholder: GX53 / 240V T2 compact fluorescent
Dimensions: Diameter: 142mm
Projection: 68mm

OPTIONS

Aluminium with Plain Bezel
Aluminium with Eyelid Shield

PRODUCT CODE

8504/AL
8591/AL



Wall/Ceiling Light

PRODUCT CODE

7512

DESCRIPTION

Small aluminium wall or ceiling light with frosted glass diffuser in threaded front bezel. Matt silver finish and supplied complete with 9w warm white fluorescent lamp.

Rated IP65

SPECIFICATIONS

Lampholder: GX53 for 9w T2 compact fluorescent.
Dimensions: Diameter: 118mm
Depth: 54mm

OPTIONS

Matt silver with 9w warm white lamp

PRODUCT CODE

7512/00/9W

PRODUCT CODE

7601

LOW VOLTAGE RECESSED STEP LIGHT WITH BACK BOX

DESCRIPTION

As 7600 but with weatherproof back box and gasket for exterior use. Glanded cable entry at rear. Bezel secured to back box with 2 socket head screws.

Rated IP54.

SPECIFICATIONS

Dimensions: **Width:** 80mm
 Height: 80mm
 Depth: 100mm incl cable gland
 Cut out: 65mm square

PRODUCT CODE

OPTIONS

7601/AL/PC	Aluminium silver powder coated
7601/GM/SD	Bronze bead blasted
7601/GM/SD/WE	Weathered bronze



PRODUCT CODE

7600

LOW VOLTAGE RECESSED STEP LIGHT

DESCRIPTION

A recessed low voltage fitting for stair, passageway and level change lighting. Cast in bronze or aluminium and with various finishes, being polished, bead blasted or powder coated. Frosted glass diffuser. For interior and sheltered exterior use

SPECIFICATIONS

Lampholder: G4 for 20W max halogen capsule
 Remote transformer required

Dimensions: **Width:** 80mm
 Height: 80mm
 Recess depth: 50mm
 Cut out: 60mm square

PRODUCT CODE

OPTIONS

7600/AL/PC	Aluminium silver powder coated
7600/AL/PO	Aluminium polished for interior use only
7600/GM/SD	Bronze bead blasted
7600/GM/SD/WE	Weathered bronze



GUARDED STEP LIGHT

PRODUCT CODE

7576



DESCRIPTION

Guarded step light with a cast front guard and ribbed glass for diffused light. Semi recessed with back box. Large enough to accommodate 15W mains voltage lamp. Low energy version available. Guard available in grey painted finish or brass with a polished or sandblasted finish. For interior or sheltered exterior use.

SPECIFICATIONS

Lampholder:	G4 for 12V 10W tungsten halogen capsule lamp Remote transformer required E14 (SES) for 240V 15W oven lamp. The oven lamp recommended to locate filament centrally in fitting.
Dimensions:	Width: 140mm Height: 111mm Projection: 24mm Recess depth: 38mm

OPTIONS

Grey powder coated, G4	7576/AL/G4
Polished brass, G4	7476/BR/G4
Sandblasted brass, G4	7576/BR/SD/G4
Grey powder coated, E14	7576/AL/E14
Polished brass, E14	7576/BR/E14
Sandblasted brass, E14	7576/BR/SD/E14

PRODUCT CODE

LOW VOLTAGE STEP OR PATH LIGHT

PRODUCT CODE

7569



DESCRIPTION

Low voltage step or path light. Semi recessed with rear glanded cable entry. The flat front glass is normally clear. Frosted or colour options available. Matt brass or weathered finish. A remote transformer is required.

Rated IP56.

SPECIFICATIONS

Lampholder:	G4 for 20W max reflector or capsule lamp
Dimensions:	Diameter: 103mm Depth (inc gland): 70mm Cut out Diameter: 65mm

OPTIONS

Brass finish	7569/BR
Weathered finish	7569/BR/WE

PRODUCT CODE

PRODUCT CODE

8595

Wall/Ceiling Light

DESCRIPTION

Rectangular path/amenity light. Die-cast in aluminium with frosted glass diffuser. Surface mounting with rear cable entry. Front cover secured by four stainless steel socket head screws.

Rated IP54.

SPECIFICATIONS

Lampholder: G9 for 240V 40W max. halogen capsule
 Dimensions: Length: 160mm
 Width: 84mm
 Projection: 60mm



PRODUCT CODE

8595/AL

OPTIONS

Aluminium with Plain Bezel

PRODUCT CODE

7235
7236

ILLUMINATED SHIP'S SIGN

DESCRIPTION

Illuminated ship's sign from the early to mid 20th Century, originally reading Saloon/Purser/Ladies/Gentlemen etc. White painted finish with brass trim and having two mounting versions: surface mount (as illustrated) or at right angles from bulkhead with circular wall plate.

Potential for customising for individual schemes.

SPECIFICATIONS

Lampholder: E27 (ES) for 60W max GLS
 Dimensions: Body size:250 x 165mm
 Depth:100mm
 Fixing crs (wall): 290mm
 Projection (right angle):300mm



PRODUCT CODE

7235
7236

OPTIONS

Surface mount version
 Right angle version

SECTION 6 UPLIGHTING



PRODUCT CODE

7602

UPLIGHT FOR SUBMERGED OR SURFACE USE

DESCRIPTION

Recessed uplight in natural sandblasted brass available in a range of finishes and suitable for a variety of wet or dry locations. The lamp is adjustable up to 15 degrees from vertical for directional lighting with 12v MR16 or 240v GU10 halogen lamps up to 50 watts. LED substitute MR16 and GU10 lamps may be fitted for low energy accent lighting and low lens temperature. A remote transformer is required for low voltage versions.

The housing is machined aluminium with bottom cable entry and pre wired with 2 metres of rubber cable. Machined grooves in the body house "O" rings which locate the recessed light firmly in it's polycarbonate sleeve.

SPECIFICATIONS

Lampholder: GX5.3 for 12v 50w max halogen reflector lamp
GU10 for 240v 50w max halogen reflector lamp or LED/CFL

Dimensions: Bezel: 125mm square
Body depth: 128mm excluding cable gland
Housing depth: 177mm
Housing diameter: 98mm i/d



PRODUCT CODE

OPTIONS

7602/BR/MR16723
7602/BR/WE/MR16
7602/BR/GU10
7602/BR/WE/GU10

Brass with GX5.3 lampholder
Weathered brass with GX5.3 lampholder
Brass with GU10 lampholder
Weathered brass with GU10 lampholder

PRODUCT CODE

7604

SPOTLIGHT FOR SUBMERGED OR SURFACE USE

DESCRIPTION

Submersible spotlight in natural cast brass with plain or shielded bezel. Fitted with brass stirrup bracket for direct fixing. Optional base plate for freestanding uses, or ground spike available. Pre-wired with 6 metres cable for direct connection to suitable remote 12V transformer.

Rated IP68.

SPECIFICATIONS

Lampholder: GX5.3 for 12V 20 - 35W dichroic reflector lamp or 50W for underwater location
Dimensions: Bezel diameter: 90mm
Body depth: 75mm excl. cable gland



PRODUCT CODE

OPTIONS

7604/BR
7604/BR/SHLD

Plain bezel, natural brass
Bezel with shield, natural brass

PRODUCT CODE

OPTIONAL EXTRAS

7604/BR/BPL
7604/BR/GSP

Brass base plate 115mm dia (illustrated)
Brass ground spike 165mm
Internal louvres and colour filters available by request.
Powder coat finishes possible - please enquire.

SECTION 7 ACCENT & SPOT LIGHTS



PRODUCT CODE

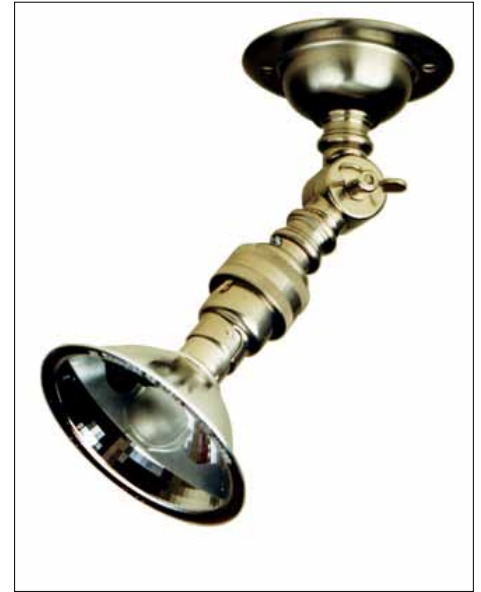
0755

ADJUSTABLE LOW VOLTAGE
SPOT LIGHT
DESCRIPTION

A simple design, making a feature of its component parts. Swivel base with adjustable knuckle joint. The nickel plating to the fitting and the reflector lamp unifies its appearance. Bronze finish is also available. The anti glare bar over the lamp makes this a discreet source of spot lighting. A remote transformer is required.

SPECIFICATIONS

Lampholder: BA15d (SBC)
Lamp: Osram Halospot 70 12V 20W or 50W
Beam angle: 8° spot or 24° flood
Dimensions: Length o/a: 150mm inc lamp
Base plate: 65mm O/D fixing centres.



PRODUCT CODE

OPTIONS

0755/NP/0820	Nickel plated 8° spot 20W
0755/NP/2420	Nickel plated 24° flood 20W
0755/BR/WE/0820	Bronze 8° spot 20W
0755/BR/WE/2420	Bronze 24° flood 20W
0755/NP/0850	Nickel plated 8° spot 50W
0755/NP/2450	Nickel plated 24° flood 50W
0755/BR/WE/0850	Bronze 8° spot 50W
0755/BR/WE/2450	Bronze 24° flood 50W

0758

ADJUSTABLE SPOT LIGHT WITH
INTEGRAL TRANSFORMER
DESCRIPTION

Backplate contains integral transformer.

SPECIFICATIONS

Dimensions: Length o/a: 170mm inc lamp
Dome: 85mm fixing centres 90mm O/D

PRODUCT CODE

OPTIONS

0758/NP/0820	Nickel plated 8° spot 20W
0758/NP/2420	Nickel plated 24° flood 20W
0758/BR/WE/0820	Bronze 8° spot 20W
0758/BR/WE/2420	Bronze 24° flood 20W
0758/NP/0850	Nickel plated 8° spot 50W
0758/NP/2450	Nickel plated 24° flood 50W
0758/BR/WE/0850	Bronze 8° spot 50W
0758/BR/WE/2450	Bronze 24° flood 50W



ADJUSTABLE LOW VOLTAGE SPOTLIGHT WITH SHADE

PRODUCT CODE

0761

DESCRIPTION

As 0755 with shade fitted.

SPECIFICATIONS

Lampholder:	BA15d (SBC)
Lamp:	Osram Halospot 70 12V 20W or 50W
Beam angle:	8° spot or 24° flood
Dimensions:	Length o/a: 150mm inc lamp Base plate: 65mm O/D fixing centres.

OPTIONS

Nickel plated 8° spot 20W	0761/NP/0820
Nickel plated 24° flood 20W	0761/NP/2420
Bronze 8° spot 20W	0761/BR/WE/0820
Bronze 24° flood 20W	0761/BR/WE/2420
Nickel plated 8° spot 50W	0761/NP/0850
Nickel plated 24° flood 50W	0761/NP/2450
Bronze 8° spot 50W	0761/BR/WE/0850
Bronze 24° flood 50W	0761/BR/WE/2450

PRODUCT CODE


ADJUSTABLE LOW VOLTAGE SPOTLIGHT WITH SHADE AND INTEGRAL TRANSFORMER

PRODUCT CODE

0762

DESCRIPTION

Backplate contains integral transformer.

SPECIFICATIONS

Dimensions:	Length o/a: 170mm inc lamp
Dome:	85mm fixing centres 90mm O/D

OPTIONS

Nickel plated 8° spot 20W	0762/NP/0820
Nickel plated 24° flood 20W	0762/NP/2420
Bronze 8° spot 20W	0762/BR/WE/0820
Bronze 24° flood 20W	0762/BR/WE/2420
Nickel plated 8° spot 50W	0762/NP/0850
Nickel plated 24° flood 50W	0762/NP/2450
Bronze 8° spot 50W	0762/BR/WE/0850
Bronze 24° flood 50W	0762/BR/WE/2450

PRODUCT CODE


PRODUCT CODE YACHT VENTILATOR COVER

2464

DESCRIPTION

Yacht ventilator cover cast in aluminium or bronze. Striking effect from a halogen capsule lamp for a low level accent or step light with a sleek profile. The cover is surface mounted but the lampholder requires recessing.

For interior use.

SPECIFICATIONS

Lampholder: G4 for 12V 10W halogen capsule.
Remote transformer required.

Dimensions: Length: 160mm
Width: 147mm
Projection: 35mm
Recess Minimum: 30mm



PRODUCT CODE **OPTIONS**

2464/AL/AN	Anodised aluminium
2464/GM/PO	Polished bronze
2464/GM/WE	Weathered bronze

PRODUCT CODE MOTORBOAT VENTILATOR COVER

2467

DESCRIPTION

A new use for a 1920's motorboat ventilator cover. A stylish bronze casting covers a low wattage lamp to give discreet downward lighting. Surface mounted with various finishes available.

SPECIFICATIONS

Lampholder: E14 (SES) for 240V 15W pygmy lamp
G4 for 12V 10W halogen capsule.
Remote transformer required

Dimensions: Length: 160mm
Width: 122mm
Projection: 68mm



PRODUCT CODE **OPTIONS**

2467/GM/E14	Polished bronze E14
2467/GM/E14/WE	Weathered bronze E14
2467/GM/G4	Polished bronze G4
2467/GM/G4/WE	Weathered bronze G4

SECTION 8 PILLAR LIGHTS



PRODUCT CODE PILLAR LIGHTS WITH GLASS RODS

7210
7211

DESCRIPTION

Glass pillar lights of brass construction in two profiles.
The curved diffusers are made of 8mm diameter solid glass rods.

Available in weathered brass or chrome plated finishes.
Custom lengths possible.

They incorporate either a batten and a 35W clear Architectural strip light (IP20) or a T5 assembly (IP44) with 8W/830 warm white lamp

7210

SPECIFICATIONS

Lampholder: 2 x S14s for 35W max architectural lamp
G5 for 8W T5 fluorescent
Dimensions: Height: 400mm
Projection: 75mm
Width at back: 150mm



PRODUCT CODE

OPTIONS

7210/WE/S14
7210/WE/G5

Weathered brass for 35W incandescent
Weathered brass for 8W fluorescent

7211

SPECIFICATIONS

Lampholder: 2 x S14s for 35W max architectural lamp
G5 for 8W T5 fluorescent
Dimensions: Height: 400mm
Projection: 90mm
Width at back: 68mm
Width overall: 100mm



PRODUCT CODE

OPTIONS

7211/WE/S14
7211/WE/G5
7211/CP/E14
7211/CP/G5

Weathered brass for 35W incandescent
Weathered brass for 8W fluorescent
Chrome plated for 35W incandescent
Chrome plated for 8W fluorescent

PILLAR LIGHT

PRODUCT CODE

7218



DESCRIPTION

Pillar light for surface mounting with opal acrylic diffuser. Brass construction with polished unlacquered or antique bronze finish, or chromium plated. Two standard lengths are available although specials can be produced.

The 250mm size has an integral back plate for GLS or low energy light sources. The 685mm contains a 14W T5 fluorescent batten fitting.

The GLS version is for vertical use only.

SPECIFICATIONS

Lampholder:

Size 1: E14 (SES) for 40W max candle lamp
vertically mounted.

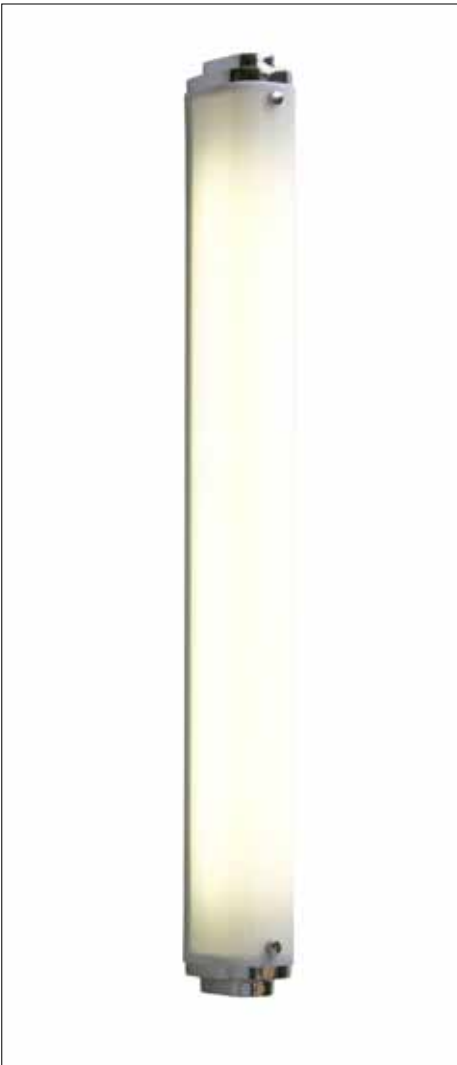
G23 for 5-9W CFL
G24 for 10/13W CFL

Size 2: Batten type 14W T5 fluorescent fitting with
integral gear

Dimensions:

Size 1: Length: 250mm Width: 75mm Projection: 85mm

Size 2: Length: 685mm Width: 75mm Projection: 85mm



OPTIONS 1

Polished brass for 40W GLS candle	7218/BR/E14
Weathered brass for 40W GLS candle	7218/BR/E14/WE
Polished brass for 5-9W CFL	7218/BR/G23
Weathered brass for 5-9W CFL	7218/BR/G23/WE
Polished brass for 10/13W CFL	7218/BR/G24
Weathered brass for 10/13W CFL	7218/BR/G24/WE
Chrome plated for 40W GLS candle	7218/CP/E14
Chrome plated for 5-9W CFL	7218/CP/G23
Chrome plated for 10/13W CFL	7218/CP/G24

PRODUCT CODE

OPTIONS 2

Polished brass for 14W batten	7218/BR/685/14
Weathered brass for 14W batten	7218/BR/685/14/WE
Chrome plated for 14W batten	7218/CP/685/14

PRODUCT CODE

SECTION 9 BOX WALL & BOX PENDANT LIGHTS





SQUARE PENDANT

DESCRIPTION

Square box pendant in weathered brass, for interior use. Suspended on brass hook and rod -600mm long. Clear glass on four sides, with open top and base.

SPECIFICATIONS

Lampholder: E27 for 100W max GLS
 Dimensions: Height of frame: 425mm
 Width: 255mm square

OPTIONS

Square pendant, weathered brass

PRODUCT CODE

7639

PRODUCT CODE

7639/BR/WE



WALL OR PENDANT LIGHT

DESCRIPTION

Square light with sloping sides. Wall version with bracket as illustrated. Clear glass with open base and top for interior use. Weathered brass finish.

SPECIFICATIONS

Lampholder: E27 for 60W max GLS
 Dimensions: Height of frame: 165mm
 Width: 185mm square
 With bracket: Projection: 245mm overall

OPTIONS

Pendant version
 Wall version with bracket

PRODUCT CODE

7636

PRODUCT CODE

7636/BR/WE/PE
 7636/BR/WE/BRKT



WALL LANTERN

DESCRIPTION

Weathered brass finish as standard. Glass panels on three sides. Removable pins at each side allow access and/or removal of the box front.

SPECIFICATIONS

Lampholder: E27 for 60W max GLS
 Dimensions: Height o/a: 410mm
 Width o/a: 220mm
 Projection: 175mm

OPTIONS

Weathered brass, clear glass

PRODUCT CODE

0276

PRODUCT CODE

0276/BR/WE/CL



SQUIRREL CAGE LAMP

DESCRIPTION

Originally a ship's navigation lamp. The filament profile ensured an equal brightness from all directions. Today this unusual lamp is a striking feature, whether in a traditional or modern lantern. Rated at 2000 hours, slight dimming will prolong life and further enhance the effect of the glowing filament.

60 watt clear E27 cap

PRODUCT CODE

9905

PRODUCT CODE

9905/CL/24060/ES

PRODUCT CODE

7250

WALL LIGHT

DESCRIPTION

Wall Light with traditional curved top and glazed base. Weathered brass finish.

SPECIFICATIONS

Lampholder: E27 for 60W max GLS
 Dimensions: Height o/a: 375mm
 Width: 215mm
 Projection: 150mm

PRODUCT CODE

7250/BR/WE

OPTIONS

Weathered brass



PRODUCT CODE

7649

NARROW WALL LIGHT

DESCRIPTION

Narrow box wall light in weathered brass, with clear glass in beaded frames.

SPECIFICATIONS

Lampholder: E27 for 60W max GLS
 Dimensions: Height: 365mm
 Width: 130mm
 Projection: 140mm

PRODUCT CODE

7649/BR/WE

OPTIONS

Weathered brass



PRODUCT CODE

7643

MINATURE BOX WALL LIGHT INTERNALLY GLAZED

DESCRIPTION

Construction as above, but glazed on five sides as standard.

SPECIFICATIONS

Lampholder: BA15d (SBC) for 40W max candle
 Dimensions: Height: 180mm
 Width: 120mm
 Projection: 100mm

PRODUCT CODE

7643/BR/WE/CL
 7643/BR/WE/FR

OPTIONS

Weathered brass, clear glass
 Weathered brass, frosted glass





BOX WALL LIGHTS INTERNALLY GLAZED

PRODUCT CODE

7644
7654

DESCRIPTION

Glass fitted inside box frame on three sides. This allows for glazing after any plating or paint finishes, or gives a simpler appearance if desired.

Glass is clear or frosted.

Antique brass finish is standard. Plated or painted finishes are quoted on request.

SPECIFICATIONS

Lampholder: E27 (ES) for 60W max GLS or compact fluorescent equivalent

Dimensions:

7644: Height: 290mm
Width: 200mm
Projection: 110mm

7645: Height: 360mm
Width: 210mm
Projection: 130mm

OPTIONS

Brass finish

Weathered finish

Brass finish

Weathered finish

PRODUCT CODE

7644/BR

7644/BR/WE

7645/BR

7645/BR/WE



BOX WALL LIGHTS EXTERNALLY GLAZED

PRODUCT CODE

7641
7642

DESCRIPTION

Hand made in brass, with antique finish. Glass panels with brass beaded frames applied externally to three sides. Standard dimensions below, or to customers' specification for batch quantities. Removable pins at each side allow access and/or removal of the box front.

When clear glazed, a clear lamp is recommended.

The frosted glass version is more suitable when a low energy lamp, or a diffused light, is required.

SPECIFICATIONS

Lampholder: E27 (ES) for 60W max GLS or compact fluorescent equivalent

Dimensions:

7641: Height: 290mm
Width: 200mm
Projection: 110mm

7642: Height: 360mm
Width: 210mm
Projection: 130mm

OPTIONS

Weathered brass, clear glass

Weathered brass, frosted glass

Weathered brass, clear glass

Weathered brass, frosted glass

PRODUCT CODE

7641/BR/WE/CL

7641/BR/WE/FR

7642/BR/WE/CL

7642/BR/WE/FR

SECTION 10 PENDANT REFLECTORS





SPUN REFLECTOR IN ALUMINIUM OR COPPER

PRODUCT CODE

7165

DESCRIPTION

Originally an agricultural reflector. Available in polished aluminium, polished copper or weathered copper. Supplied with either a porcelain suspension lampholder or cord grip lampholder for flex suspension.

The cord grip lamp holder is supplied as standard with 1.5 meters of cable and a matching ceiling rose. The porcelain suspension lamp holder is supplied as standard with 1.5 meters of cable, chain and a ceiling hook plate.

SPECIFICATIONS

Lampholder: E27 (ES) for 60W max GLS
 Dimensions: Height: 275mm
 Diameter: 112mm

OPTIONS

Polished aluminium with porcelain suspension lampholder
 Polished aluminium with cord grip lampholder
 Polished copper with porcelain suspension lampholder
 Polished copper with cord grip lampholder
 Weathered copper with suspension lampholder
 Weathered copper with cord grip lampholder

PRODUCT CODE

7165/AL/SLH
 7165/AL/CGLH
 7165/CO/PO/SLH
 7165/CO/PO/CGLH
 7165/CO/WE/SLH
 7165/CO/WE/CGLH



SPUN REFLECTOR IN ALUMINIUM OR COPPER

PRODUCT CODE

7170

DESCRIPTION

Spun, corrugated reflector, available in polished aluminium, polished copper, or weathered copper. Supplied with either a porcelain suspension lampholder or cord grip lampholder for flex suspension.

The cord grip lamp holder is supplied as standard with 1.5 meters of cable and a matching ceiling rose. The porcelain suspension lamp holder is supplied as standard with 1.5 meters of cable, chain and a ceiling hook plate.

SPECIFICATIONS

Lampholder: E27 (ES) for 60W max GLS
 Dimensions: Height: 275mm
 Diameter: 112mm

OPTIONS

Polished aluminium with porcelain suspension lampholder
 Polished aluminium with cord grip lampholder
 Polished copper with porcelain suspension lampholder
 Polished copper with cord grip lampholder
 Weathered copper with suspension lampholder
 Weathered copper with cord grip lampholder

PRODUCT CODE

7170/AL/SLH
 7170/AL/CGLH
 7170/CO/PO/SLH
 7170/CO/PO/CGLH
 7170/CO/WE/SLH
 7170/CO/WE/CGLH



PRODUCT CODE

7109

SPUN REFLECTOR IN ALUMINIUM OR COPPER

DESCRIPTION

Polished finish is standard although may be powder coated or anodised to order. This light is supplied as standard with 1.5 meters of cable and with a matching ceiling rose.

SPECIFICATIONS

Lampholder: E27 (ES) for 60W max GLS
 Dimensions: Height: 275mm
 Diameter: 112mm

PRODUCT CODE

OPTIONS

7109/AL
 7109/CO/PO

Polished aluminium
 Polished copper



PRODUCT CODE

7111

SPUN ALUMINIUM REFLECTOR

DESCRIPTION

Polished aluminium finish is standard although may be powder coated or anodised to order. This light is supplied as standard with 1.5 meters of cable and with a matching ceiling rose.

SPECIFICATIONS

Lampholder: E27 (ES) for 150W max GLS
 Dimensions: Height: 315mm
 Diameter: 200mm

PRODUCT CODE

OPTIONS

7111/AL

Polished aluminium



PRODUCT CODE

7105

ALUMINIUM PENDANT

DESCRIPTION

This aluminium pendant is supplied as standard with 1.5 meters of cable, stainless steel wire and a matching ceiling rose.

SPECIFICATIONS

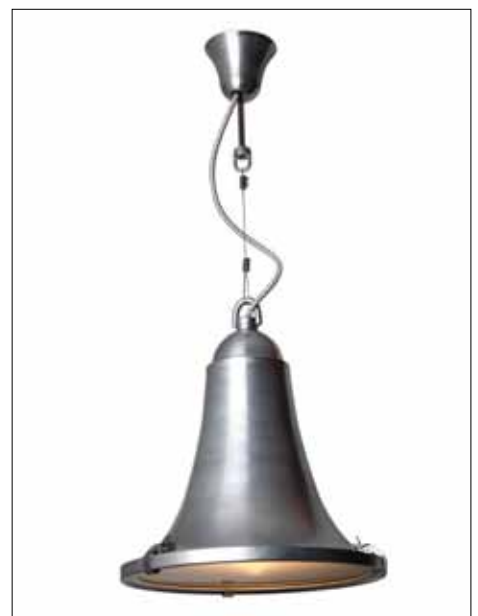
Lampholder: E27 for max 200W GLS
 Dimensions: Height o/a: 345mm
 diameter: 345mm

PRODUCT CODE

OPTIONS

7105/00/M-ANOD
 7105/FR/M-ANOD

Matt anodised without glass
 Matt anodised with glass





FACTORY/SCHOOL LIGHT

PRODUCT CODE

7200

DESCRIPTION

Spun factory type reflector in aluminium, painted green/white, also available in polished copper or weathered copper with white interior. This light is supplied as standard with 1.5 meters of cable, chain and a ceiling hook plate.

SPECIFICATIONS

Lampholder: E27 (ES) for 100W max GLS or low energy equivalent.
 Dimensions: Height: 225mm
 Diameter: 405mm

OPTIONS

Green/white
 Polished copper/white
 weathered copper/white

PRODUCT CODE

7200/GR
 7200/CO/PO
 7200/CO/WE



FACTORY LIGHT

PRODUCT CODE

7201

DESCRIPTION

Spun aluminium originally for general indoor lighting in industrial and commercial locations. The deeper profile allows space for larger low energy lamps to be used. This light is supplied as standard with 1.5 meters of cable and with a matching ceiling rose.

SPECIFICATIONS

Lampholder: E27 (ES) for 100W max GLS
 Dimensions: Height: 275mm
 Diameter: 440mm

OPTIONS

Spun aluminium

PRODUCT CODE

7201/AL



ALUMINIUM PENDANT

PRODUCT CODE

7199

DESCRIPTION

Polished aluminium industrial reflector with square pierced ventilation holes. This light is supplied as standard with 1.5 meters of cable and with a matching ceiling rose.

SPECIFICATIONS

Lampholder: E27 (ES) for 100W max GLS or low energy equivalent.
 Dimensions: Height: 220mm
 Diameter: 400mm

OPTIONS

Polished aluminium

PRODUCT CODE

7199/AL

SECTION 11 DECKLIGHTS



SMALL DECKLIGHT

PRODUCT CODE

7125



DESCRIPTION

Small decklight spun in brass or copper, and fitted with a clear or opal well glass. An unlaquered, polished finish, or weathered finish, or matt black paint finish is available.

The fitting can be attached to a black swan neck bracket, as illustrated below.

The pendant light is supplied as standard with 1.5 meters of cable, chain and a ceiling hook plate.

SPECIFICATIONS

Lampholder:	E27 (ES) for 100W max GLS
Dimensions:	Diameter: 270mm
	Height: 280mm
	Bracket Projection: 325mm
	Height o/a including swan neck: 420mm

OPTIONS

PRODUCT CODE



Black painted, clear glass	7125/BL/CL
Black painted, opal glass	7125/BL/OP
Black on bracket, clear glass	7125/BL/CL/SN
Black on bracket, opal glass	7125/BL/OP/SN
Polished brass, clear glass	7125/BR/CL
Polished brass, opal glass	7125/BR/OP
Polished brass, clear glass & bracket	7125/BR/CL/SN
Polished brass, opal glass & bracket	7125/BR/OP/SN
Polished copper, clear glass	7125/CO/CL
Polished copper, opal glass	7125/CO/OP
Polished copper, clear glass & bracket	7125/CO/CL/SN
Polished copper, opal glass & bracket	7125/CO/OP/SN
Weathered finish, clear glass	7125/OO/CL/WE
Weathered finish, opal glass	7125/OO/OP/WE
Weathered finish, clear glass & bracket	7125/CL/WE/SN
Weathered finish, opal glass & bracket	7125/OP/WE/SN

SHIP'S LARGE DECKLIGHT

PRODUCT CODE

7244



DESCRIPTION

Decklight with either dark green painted or weathered finish. The glass is clear or opal.

The pendant light is supplied as standard with 1.5 meters of cable, chain and a ceiling hook plate.

SPECIFICATIONS

Lampholder:	E27 for max 150W GLS
Dimensions:	Diameter of reflector: 350mm
	Height overall: 400mm

OPTIONS

PRODUCT CODE

Green with clear glass	7244/GR/CL
Green with opal glass	7244/GR/OP
Weathered finish, with clear glass	7244/OO/CL/WE
Weathered finish, with opal glass	7244/OO/OP/WE

PRODUCT CODE
7238

STEEL WORKING LIGHT WITH PROTECTIVE GUARD

DESCRIPTION

Deck working light in galvanized steel, with galvanized wired gard.

This light is supplied as standard with 1.5 meters of cable, chain and a ceiling hook plate. A direct connection to galvanized conduit with a ceiling hook plate or a ball and socket is available on request.

Ball and socket (3097/GA).

See accessories page for details.

SPECIFICATIONS

Lampholder: E27 (ES) Max 100W
Dimensions: Diameter: 400mm
Height: 300mm

PRODUCT CODE

7238/GA/1ES
7238/GR/1ES

OPTIONS

Galvanized pendant
Green painted pendant



PRODUCT CODE

7220

CAST BRASS DECK LIGHT

DESCRIPTION

Highly-engineered cast brass deck light with strong copper reflector, internally white painted. Heavy brass wire guard and clear well glass.

This light is supplied as standard with 1.5 meters of cable, chain and a ceiling hook plate. A direct connection to galvanized conduit with a ceiling hook plate or a ball and socket is available on request.

Ball and socket (3097/GA).

See accessories page for details.

SPECIFICATIONS

Lampholder: E27 (ES) Max 100W
Dimensions: Diameter: 315mm
Height: 345mm

PRODUCT CODE

7220/CO/CL

OPTIONS

Copper with clear glass



CARGO CLUSTER LIGHT

PRODUCT CODE

7242

DESCRIPTION

Steel ship's cargo cluster light in various finishes, with protective guard. Available as a pendant fitting or with adjustable steel bracket for ceiling or wall fixing. Reflector may be painted (green outside, white inside) or galvanized. Special paint finishes possible. The guard is galvanized. A single central lampholder is standard or a six lampholder cluster can be specified.

This light is supplied as standard with 1.5 meters of cable, chain and a ceiling hook plate. A direct connection to galvanized conduit with a ceiling hook plate or a ball and socket is available on request.

See accessories page for details.

SPECIFICATIONS

Lampholder: 1 x E27 (ES) Max 100W
or 6 x B22 (BC) each. max 40W location

Dimensions: Diameter: 500mm
Height: 320mm

OPTIONS

Galvanized 6 x B22 (BC), pendant
Galvanized 1 x E27 (ES), pendant
Green painted 6 x B22 (BC), pendant
Green painted 1 x E27 (ES), pendant
Galvanized 6 x B22 (BC) with bracket
Galvanized 1 x E27 (ES) with bracket
Green painted 6 x B22 (BC) with bracket
Green painted 1 x E27 (ES) with bracket

PRODUCT CODE

7242/GA/6BC
7242/GA/1ES
7242/GR/6BC
7242/GR/1ES
7242/GA/6BC/BRKT
7242/GA/1ES/BRKT
7242/GR/6BC/BRKT
7242/GR/1ES/BRKT



SECTION 12 PARAFFIN TYPE LANTERNS



ENGINE ROOM LIGHT

PRODUCT CODE

0272



DESCRIPTION

Wall-hung brass ship's Engine Room Lamp - a common design, little changed for more than a century. Brass construction with heavy bevelled glass on three sides and nickel plated reflector at back. Opening side door, and tongue and socket wall fixing. Weathered brass finish, and in two sizes.

SPECIFICATIONS

Lampholder:	BA15d (SBC) for 40W max candle lamp
Dimensions:	Size 1: Height: 310mm
	Width: 200mm
	Projection: 125mm
	Size 2: Height: 345mm
	Width: 220mm
	Projection: 135mm

OPTIONS

Size 1, weathered brass
Size 2, weathered brass

PRODUCT CODE

0272/BR/WE/310
0272/BR/WE/345

TRIANGULAR GAUGE LIGHT

PRODUCT CODE

0262



DESCRIPTION

Triangular ship's Gauge Lamp for wall mounting. Two glazed sides (one opening) and nickelled reflector at back. Tongue and socket wall fixing. Brass construction, weathered finish.

SPECIFICATIONS

Lampholder:	BA15d (SBC) for 40W max candle lamp
Dimensions:	Height: 300mm
	Width: 170mm
	Protection: 150mm

OPTIONS

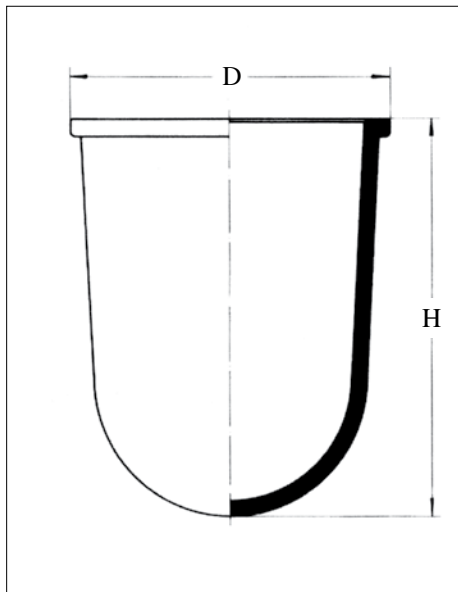
Weathered brass

PRODUCT CODE

0262/BR/WE

SECTION 13 SPARES & ACCESSORIES



**WELL GLASS 60W CLEAR OR FROTED****DESCRIPTION**

Fitted to the following: 7203, 7204, 7207, 7672-60W, 7677-60W, 7684, 7685

SPECIFICATIONS

Dimensions: Height: 165mm
 Diameter: 88mm

PRODUCT CODE**0040****WELL GLASS 100W CLEAR OR FROTED****DESCRIPTION**

Fitted to the following: 7270, 7672-100W, 7677-100W

SPECIFICATIONS

Dimensions: Height: 190mm
 Diameter: 110mm

0040**OPTIONS**

60W clear
 60W frosted
 100W clear
 100W frosted

PRODUCT CODE

0040/CL/060
 0040/FR/060
 0040/CL/100
 0040/FR/100

WELL GLASS 20W CLEAR OR FROSTED**DESCRIPTION**

Fitted to the following: 7203/M, 7204/M, 7207/M

SPECIFICATIONS

Dimensions: Height: 85mm
 Diameter: 60mm

OPTIONS

20W clear
 20W frosted

0041**PRODUCT CODE**

0041/CL/020
 0041/FR/020

WELL GLASS FOR 7125**DESCRIPTION**

Clear or opal. Fitted to 7125.

SPECIFICATIONS

Dimensions: Height: 145mm
 Diameter: 150mm

OPTIONS

Clear
 Opa

0037**PRODUCT CODE**

0037/CL
 0037/OP

WELL GLASS FOR 7244**DESCRIPTION**

Clear, or opal. Fitted to 7244

SPECIFICATIONS

Dimensions: Height: 245mm
 Diameter: 175mm

OPTIONS

Clear
 Opa

0038**PRODUCT CODE**

0038/CL
 0038/OP

PRODUCT CODE
3099

STEEL HOOK PLATE FOR CONDUIT BOX
DESCRIPTION

50mm fixing centres.

PRODUCT CODE

OPTIONS

3099/BL
3099/GA

Black enamel
Galvanized



3099/BR

BRASS DOMED CEILING PLATE WITH RIVETTED HOOK
DESCRIPTION

50mm fixing centres.

PRODUCT CODE

OPTIONS

3099/BR
3099/BR/WE

Polished brass
Weathered brass



2664

WELDED STEEL LONG LINK CHAIN
DESCRIPTION

Link size: 6mm material x 24mm inside length

PRODUCT CODE

OPTIONS

2664/BL
2664/GA

Black Japanned
Galvanized



2665

JACK CHAIN

PRODUCT CODE

OPTIONS

3099/BL
3099/GA

Black Japanned
Galvanized



9025

BRASS LONG LINK CHAIN

PRODUCT CODE

OPTIONS

3099/BL
3099/GA

Black enamel
Galvanized



1628

STAINLESS STEEL WIRE ASSEMBLY
DESCRIPTION

An unobtrusive means of suspending fittings which allows for on-site adjustment. Each assembly comprises 2 clips and 2 metres of 1.5mm stainless steel wire (other lengths by request).

PRODUCT CODE

OPTIONS

1628/SS/2000





BALL & SOCKET JOINT

PRODUCT CODE

3097

DESCRIPTION

Diameter 68mm

OPTIONS

Galvanized

PRODUCT CODE

3097/GA

COTTON BRAIDED FLEX

DESCRIPTION

Cotton braided flex is available in green/taupe, blue/taupe, sand/taupe, gold, gold/burgundy, burgundy, black/tango, black/white and plain black. Joining the cotton braided flex are two woven metallic cables, Tinned and Armour, used for industrial-style lights.



PRODUCT CODE

CODE	PAGE	CODE	PAGE	CODE	PAGE
0037	55	7204/M/GX	22	7649	42
0038	55	7207	21	7665	8
0040	55	7207/M	21	7666	8
0041	55	7210	38	7672	6
0262	53	7211	38	7677	5
0272	53	7218	39	7679	24
0276	41	7220	50	7680	6
0751	2	7225	16	7681	22
0752	3	7226	16	7684	7
0753	3	7235	30	7685	7
0755	34	7236	30	8034	18
0758	34	7238	50	8035	18
0759	2	7242	51	8037	18
0761	35	7244	49	8038	18
0762	35	7244	46	8111	19
2464	36	7250	42	8120	11
2467	36	7373	17	8122	11
2664	56	7401	21	8123	19
3099	56	7425	18	8124	19
3099/BR	56	7427	16	8125	11
7001	10	7428	16	8134	12
7003	10	7434	15	8138	12
7027	13	7435	15	8139	27
7028	13	7436	15	8140	27
7028/M	17	7521	27	8504	27
7029	13	7524	12	8591	27
7030	13	7527	11	8595	30
7034	14	7530	10	9905	41
7035	14	7567	26		
7036	14	7568	26		
7109	46	7569	29		
7111	46	7576	29		
7125	49	7600	28		
7165	45	7601	28		
7170	45	7602	32		
7199	47	7604	32		
7200	47	7636	41		
7201	47	7639	41		
7202	23	7641	43		
7203	23	7642	43		
7203/M	23	7643	42		
7204	24	7644	43		
7204/M/B15	22	7645	43		

TERMS OF BUSINESS

PRICE LISTS

Price lists are subject to alteration without notice.

PRICES

Prices are those ruling at date of despatch. Confirmation of any price can be given on request.

ORDERS

Orders and instructions given verbally are accepted only at sender's risk and should be confirmed in writing. All orders should state quantity, part number, size and finish. The acceptance of any order is on the understanding that the purchaser agrees to the Terms of Business as given here.

CARRIAGE

Carriage on goods is priced ex works (i.e. carriage extra) and is applicable on all orders.

VAT

VAT is extra and charged at the current rate.

CLAIMS

Customers should examine all goods as soon as possible upon receipt. In the event of breakage or shortage, we must be notified with 24 HOURS of receipt to enable us to register a claim with the carriers and to qualify for replacement of goods without further charge.

GOODS DELAYED IN TRANSIT

We should be advised immediately of non-delivery if goods are not received within five days from date of invoice. Failure to do so may render a claim invalid.

RETURNS

No goods can be accepted for return unless prior agreement has been made with us in writing. A handling charge will be made where applicable.

TERMS OF PAYMENT

Except where a credit account exists, we require payment before goods are despatched. For credit accounts, payment must be received no later than 30 days from date of invoice.

All items remain the property of Davey Lighting Ltd until paid for in full.

All goods supplied by us are sold on the terms set out above. Should any prove to be defective in workmanship or material, we will replace them but are not held to be held liable for any defect or breakage or any consequential loss or damage.

The use or suitability of any article, offered or recommended by us for a specific purpose is the responsibility of the purchaser.

Illustrations in the catalogue are given as a general guide to the purchaser and are not to be considered binding as to the details. Particulars as to the capacity, measurements, weight etc are given as closely as possible but we don't guarantee them to be absolutely accurate.

We cannot be responsible for the delay or loss caused by accidents, strikes or other unforeseen circumstances.

Davey Lighting Ltd.



DAVEY

ENGLAND

2011

